



King County

Item No.: 7a_Supp2
Date of Meeting: December 7, 2010



Magnolia Basin CSO Control
Port of Seattle Commission
December 7, 2010

carollo
Engineers...Working Wonders With Water®

And Associated Firms

Meeting Purpose

- Brief the Port Commission on King County's CSO control project in South Magnolia, siting and next steps

The Combined Sewer System



Conveys wastewater & stormwater to treatment plants

Pipelines & pump stations capture most of the flow, but capacity can be exceeded in storm events

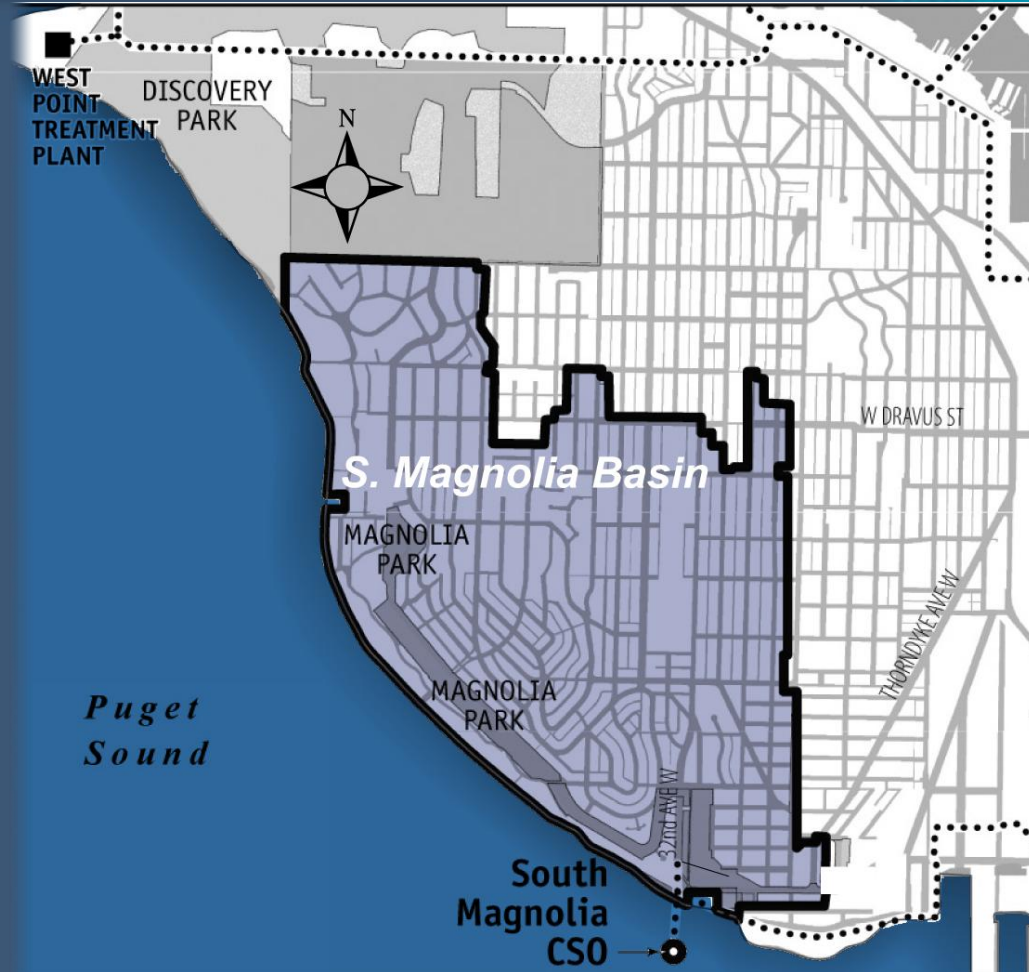
Relief points – CSOs – discharge when flows exceed capacity

What are the CSO Control Requirements?

- State Regulations require CSO overflows to be controlled to one event per year on average
- Department of Ecology deadlines are included in West Point Treatment Plant NPDES permit
 - Ecology & EPA can enforce requirements with fines and court orders
 - EPA is tracking King County's compliance schedule

Basin Description and Requirements

- 795 acres
- Magnolia CSOs
 - Average 19 events per year
 - Average 31 million gallons per year
- Control requirements
 - 1.8 million gallons of storage



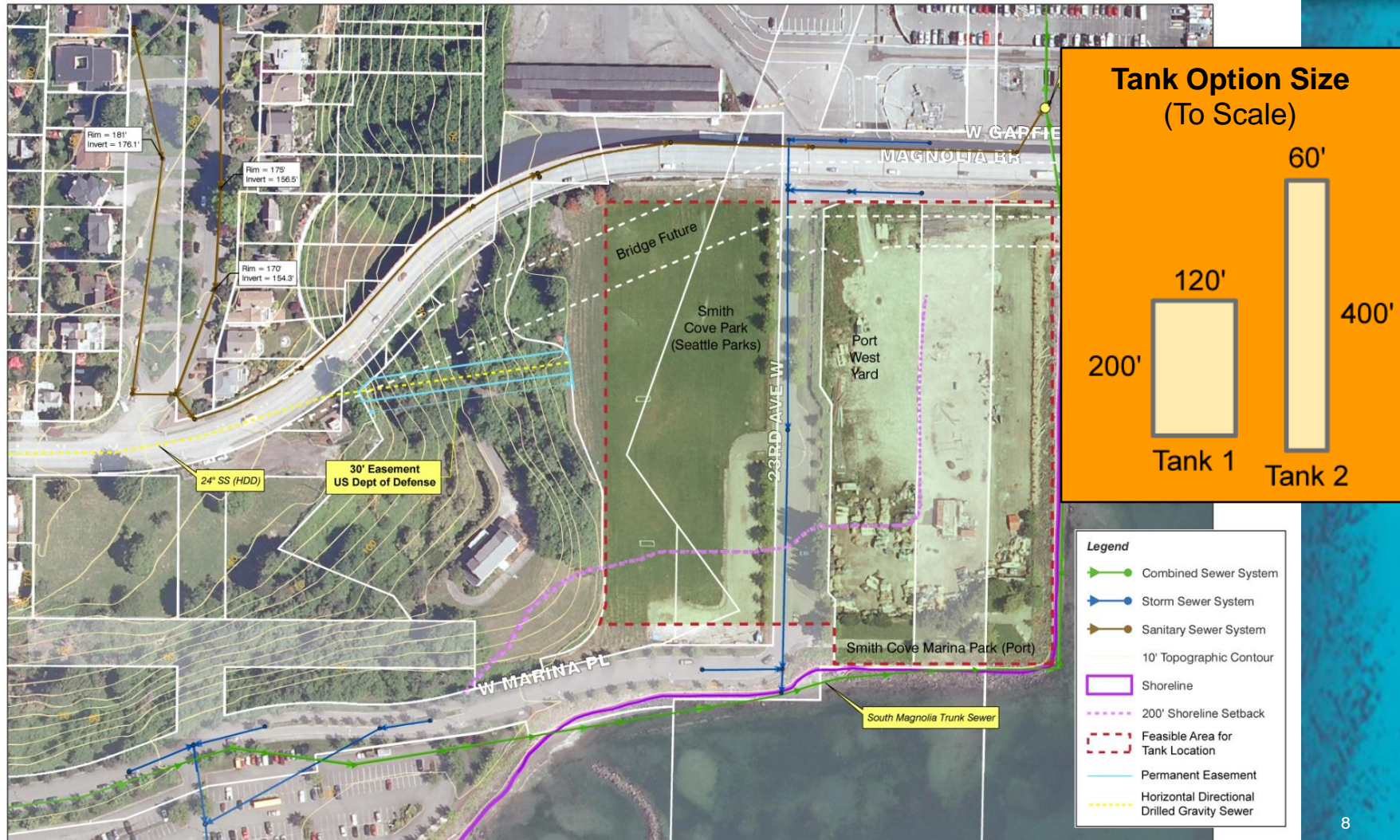
Project Timeline -- 2010 onward

- Spring 2010
 - Brief public, stakeholders on 3 alternatives
- Fall 2010
 - Identify proposal to carry forward for further design and environmental review
- December 31, 2010
 - Submit draft Facility Plan to Ecology
- Spring 2011
 - Environmental (SEPA) review & public comment
- 2012 - Complete plans and specifications
- 2013 – Construction begins

Public Outreach 2010

- Newsletter to residents of basin, with information on alternatives in March
- Updates to community and agencies
- Public meeting, Magnolia Community Center, March 23
- Meeting with the Port's Neighbors Advisory Committee, October 20

Recommended Alternative: Alternative 1F1



During and After Construction



King County



Boeing Creek Park, Shoreline- Underground Flow Control Structure

Next Steps

- Continue to work with Port of Seattle and Seattle Parks on details of partnership
- Continue community outreach
- Make public announcement of the recommended project alternative by December 15, 2010
- Continue to work with Port of Seattle and Seattle Parks to reach a decision on siting and tank configuration in first quarter 2011